



AQUIND Limited

AQUIND INTERCONNECTOR

Applicant's Draft Itinerary for the
Accompanied Site Inspection

The Planning Act 2008

Document Ref: 7.9.3

PINS Ref.: EN020022

AQUIND Limited

AQUIND INTERCONNECTOR

Applicant's Draft Itinerary for the
Accompanied Site Inspection

PINS REF.: EN020022

DOCUMENT: 7.9.3

DATE: 6 OCTOBER 2020

WSP

WSP House

70 Chancery Lane

London

WC2A 1AF

+44 20 7314 5000

www.wsp.com

DOCUMENT

Document	7.9.3 Applicant's Draft Itinerary for the Accompanied Site Inspection
Revision	001
Document Owner	WSP UK Limited
Prepared By	A. Hardwick
Date	26 May 2020
Approved By	K. Haddrell
Date	26 May 2020

CONTENTS

1.	ACCOMPANIED SITE VISIT – PROPOSED ROUTE AND VIEWPOINTS	1-1
1.1.	SCOPE	1-1
1.2.	LOCATIONS	1-1
1.3.	GEOGRAPHICAL REPRESENTATION	1-1
1.4.	LIST OF PROPOSED LOCATIONS	1-1
1.5.	SUMMARY	1-10

PLATES

Plate 1 - Google Earth image of long distance viewpoint 1 (not to scale)	1-1
Plate 2 - Google Earth image of long distance viewpoint 2 (not to scale)	1-2
Plate 3 - Google Earth image of viewpoints 1 to 8 (not to scale)	1-3
Plate 4 - Google Earth image of vewpoints 9 and 10 (not to scale)	1-4
Plate 5 - Google Earth image of vewpoints 11 to 13 (not to scale)	1-5
Plate 6 - Google Earth image of vewpoints 14 to 17 (not to scale)	1-6
Plate 7 - Google Earth image of vewpoints 18 to 21 (not to scale)	1-7
Plate 8 - Google Earth image of vewpoints 22 to 25 (not to scale)	1-8
Plate 9 - Google Earth image of vewpoints 26 to 28 (not to scale)	1-9
Plate 10 - Google Earth image of vewpoints 29 to 35 (not to scale)	1-10

1. ACCOMPANIED SITE VISIT – PROPOSED ROUTE AND VIEWPOINTS

1.1. SCOPE

1.1.1.1. This memo sets out the proposed vantage points for the accompanied site visit with PINS as part of the Aquind DCO examination process.

1.2. LOCATIONS

1.2.1.1. The locations have been selected following detailed input from the EIA, planning and engineering team and best reflect key areas on both the converter, cable and landfall areas of the Proposed Development.

1.3. GEOGRAPHICAL REPRESENTATION

1.3.1.1. Please see the plates below to illustrate the recommended locations on Google Earth.

1.4. LIST OF PROPOSED LOCATIONS

1.4.1. LONG DISTANCE VIEWPOINTS (TO CONVERTER STATION AREA)

1. Viewpoint 17, South Downs Way



Plate 1 - Google Earth image of long distance viewpoint 1 (not to scale)

2. Viewpoint 5, Catherington Down

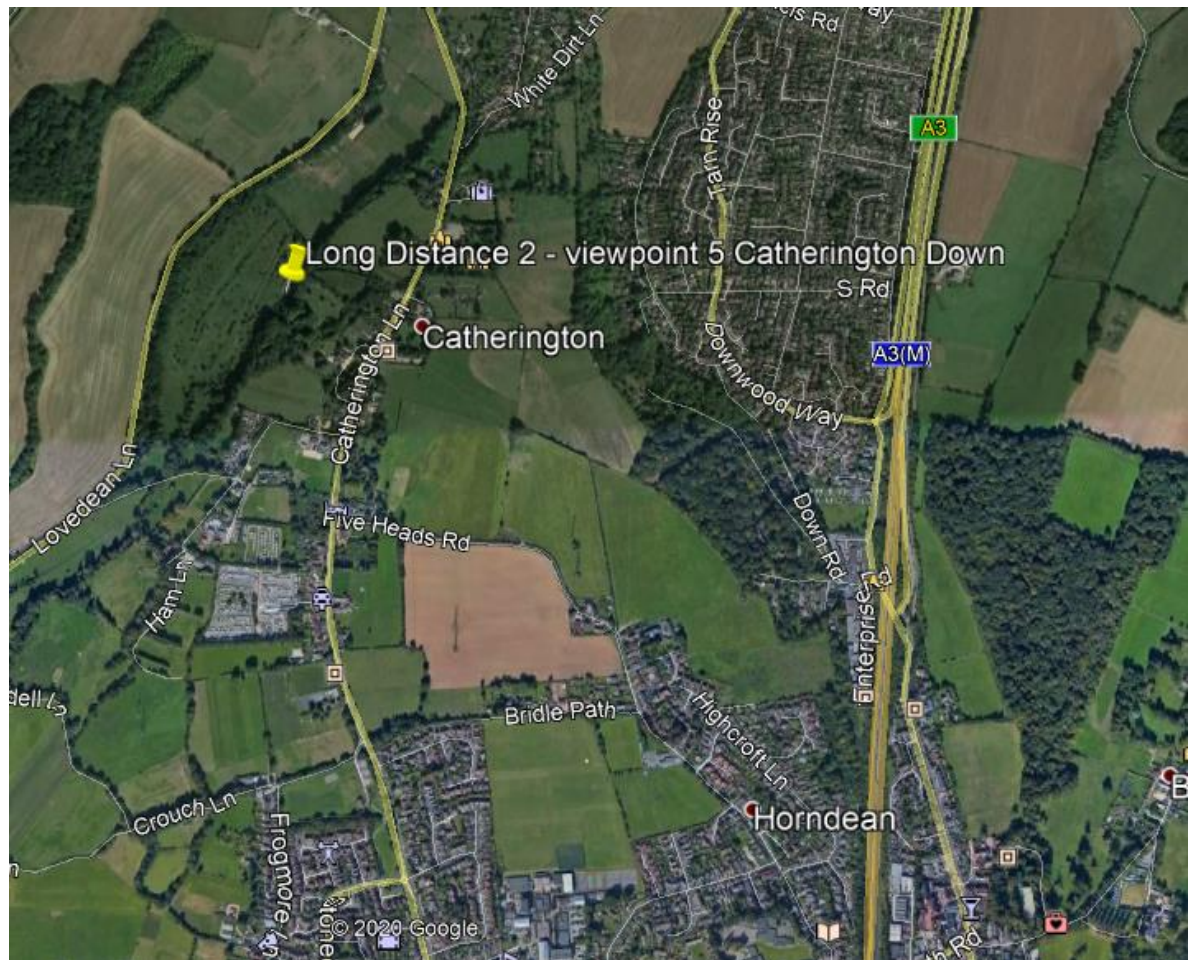


Plate 2 - Google Earth image of long distance viewpoint 2 (not to scale)

1.4.2.

PROPOSED DEVELOPMENT VIEWPOINTS (CONVERTER STATION AREA, CABLE ROUTE, LANDFALL)

1. Old Mill Lane
2. Monarchs Way 1
3. Monarchs Way 2
4. Broadway Lane
5. Converter Station Access Road
6. Converter Station South
7. Unnamed Road off Edney's Lane

8. Converter Station west

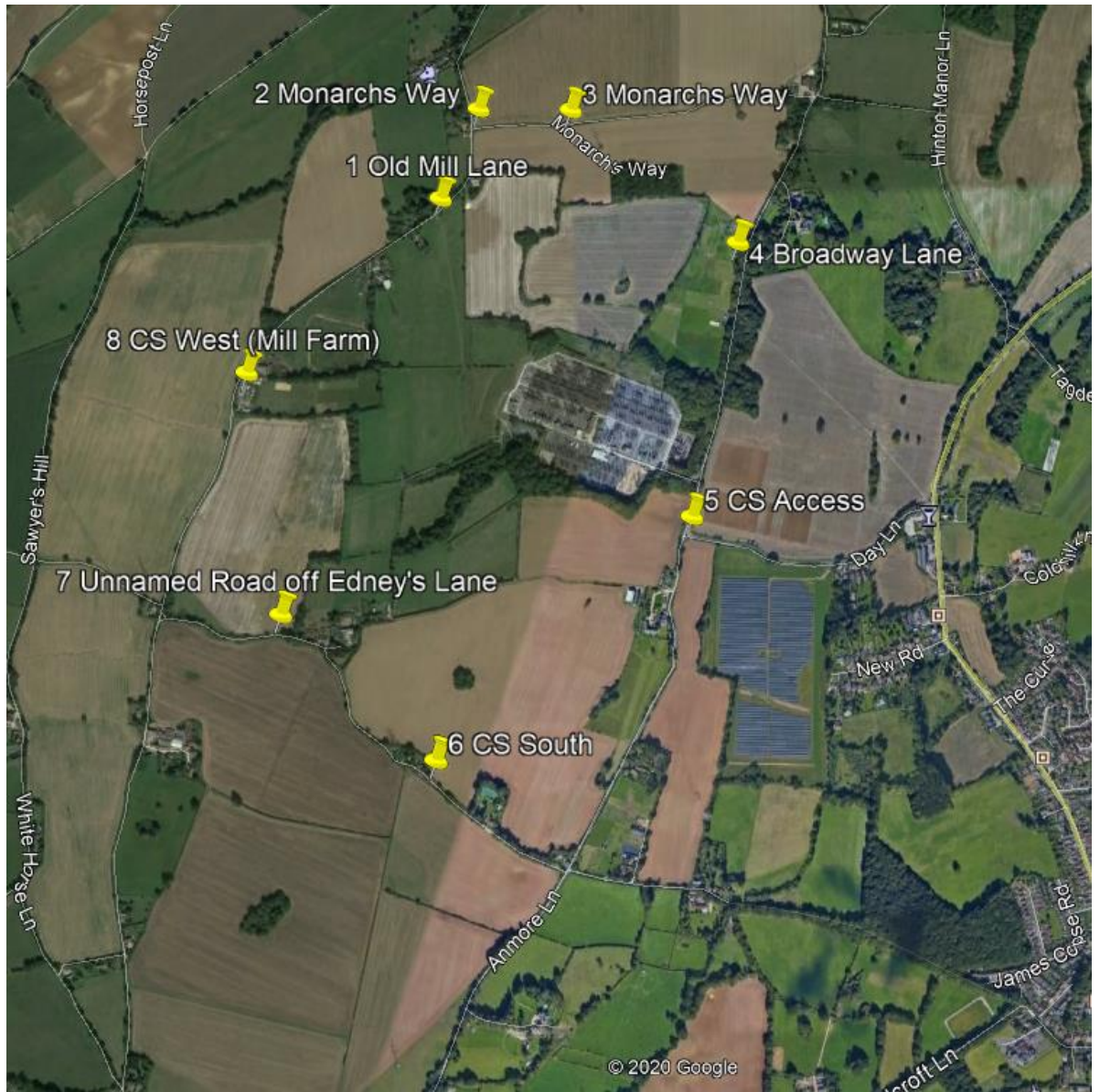


Plate 3 - Google Earth image of viewpoints 1 to 8 (not to scale)

- 9. Anmore/Kings Pond/Denmead
- 10. Hambledon Road/Soake Road

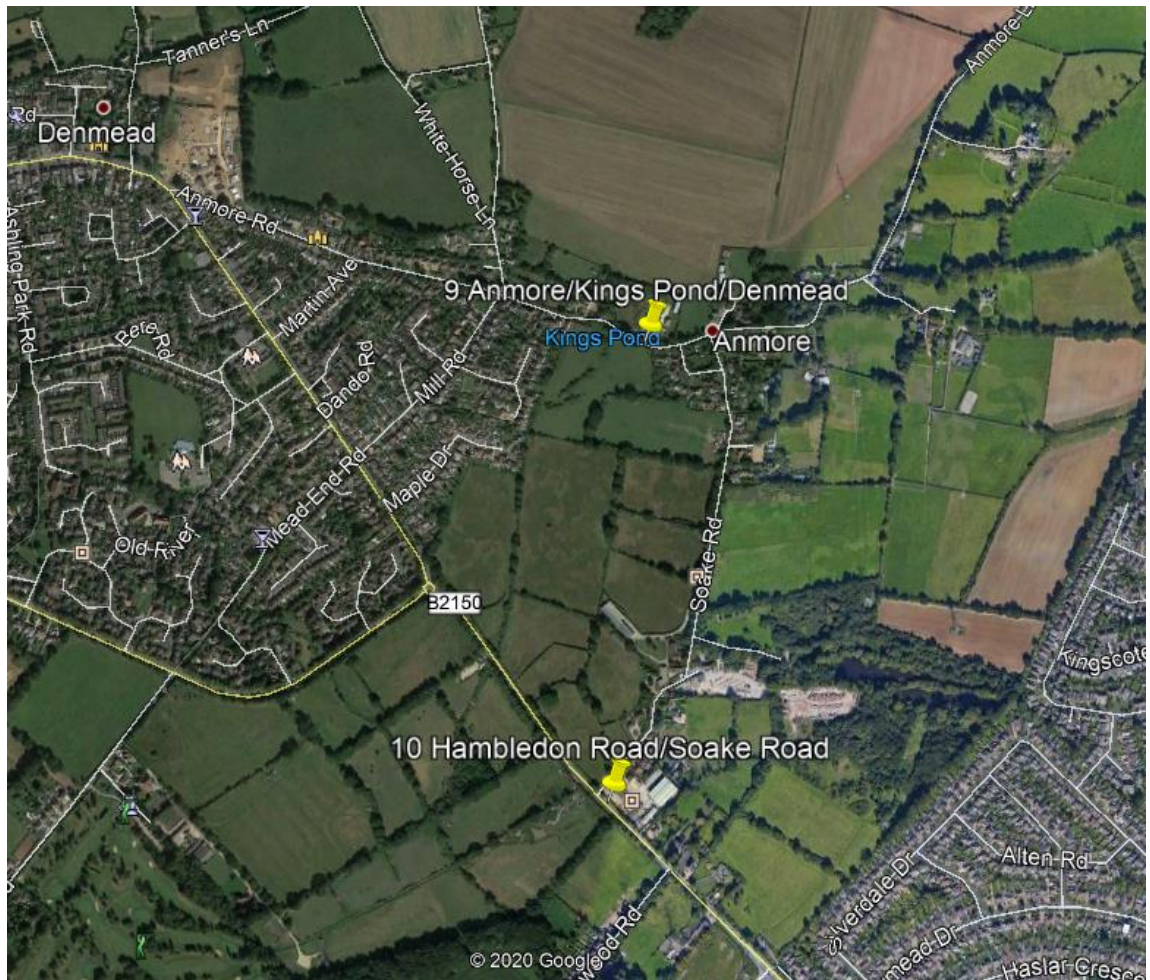


Plate 4 - Google Earth image of viewpoints 9 and 10 (not to scale)

11. Hambledon Parade
12. London Road/Elettra Avenue
13. London Road/Maurepas Way



Plate 5 - Google Earth image of viewpoints 11 to 13 (not to scale)

- 14. West Waterloo, London Road/Milk Lane
- 15. Ladybridge Roundabout
- 16. A3 London Road (bus lanes)
- 17. Portsdown Hill (to include A3 spur)

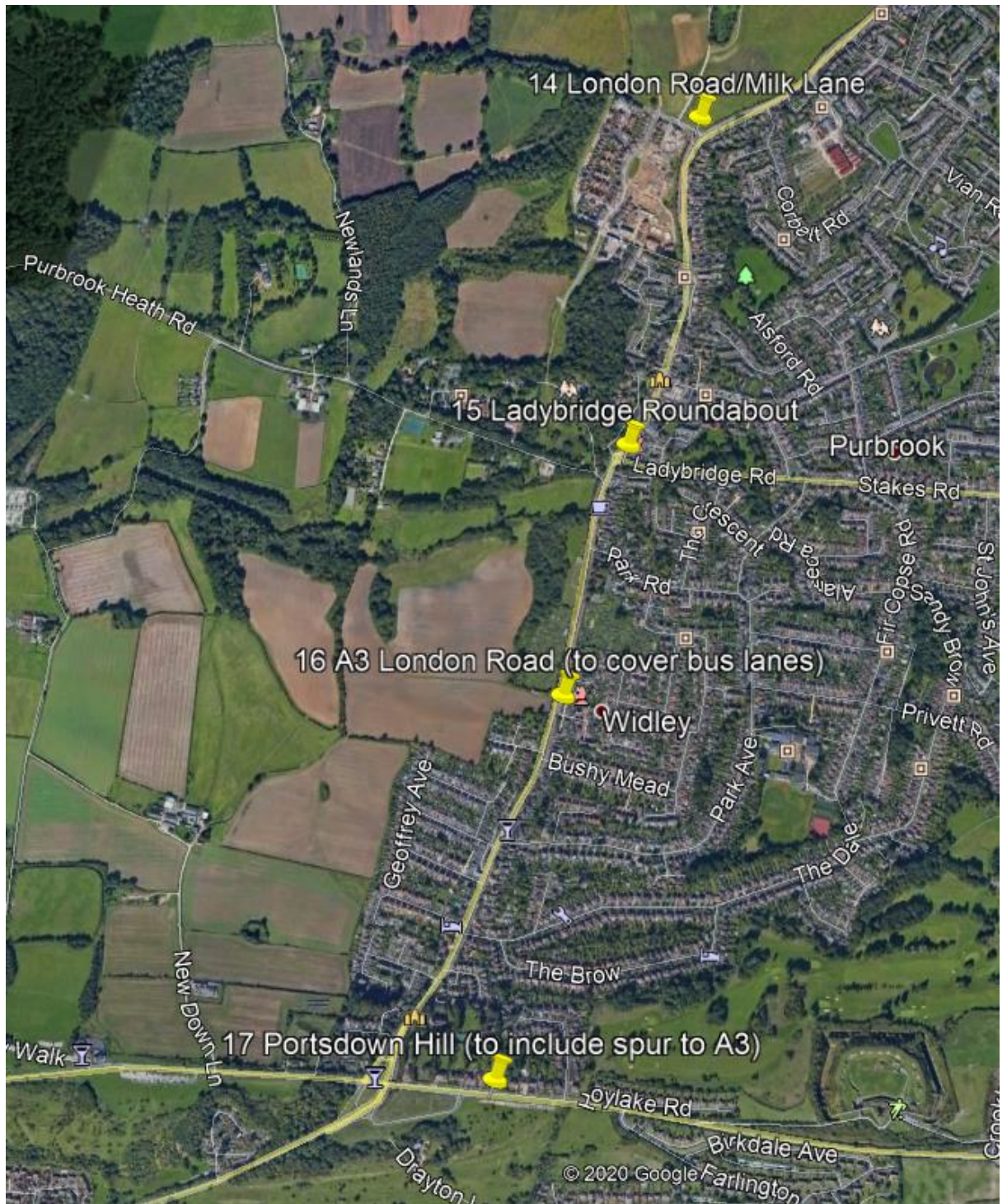


Plate 6 - Google Earth image of viewpoints 14 to 17 (not to scale)

- 18. Farlington Road/Eveleigh Road
- 19. Havant Road

- 20. Fitzpatrick Road/Zetland Field/Sainsbury's
- 21. Farlington Playing Fields

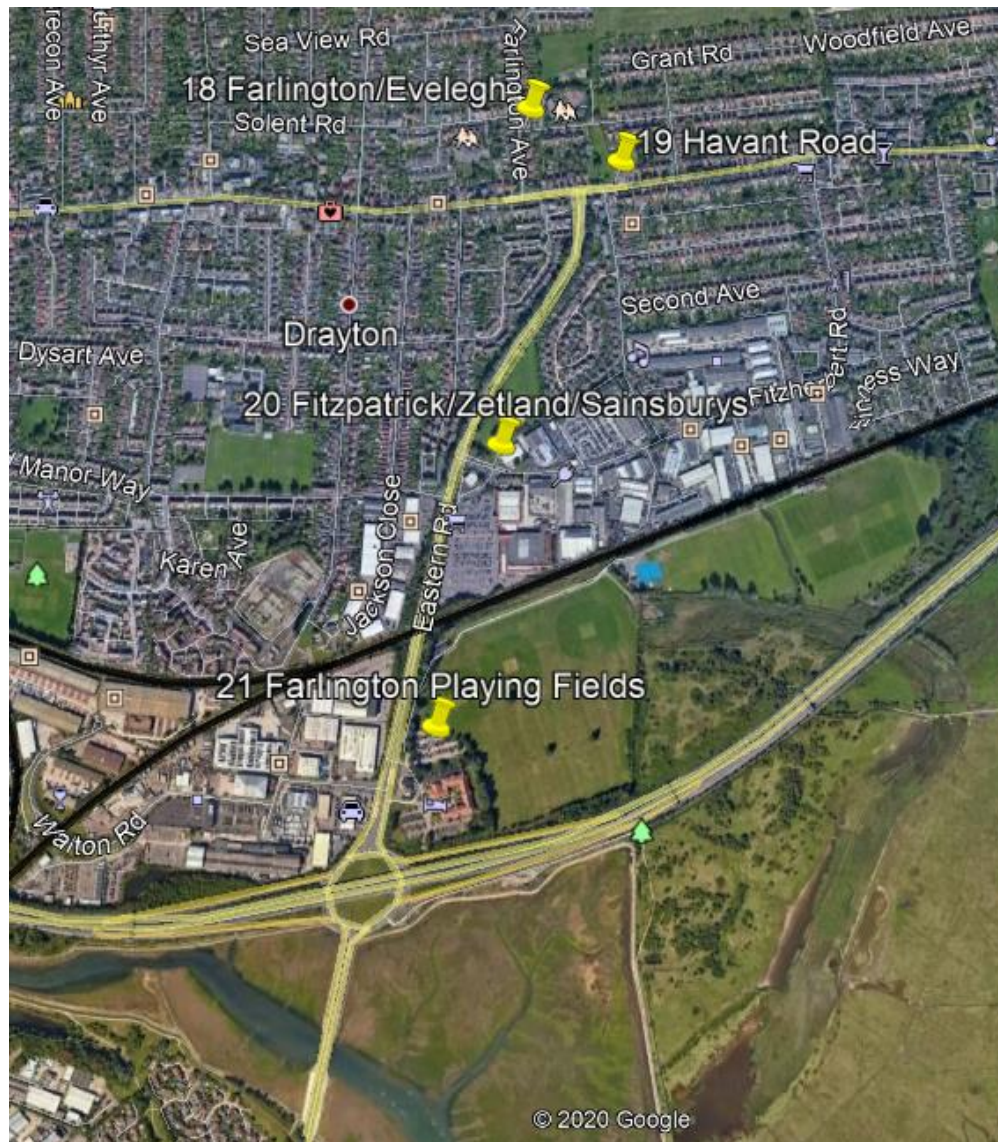


Plate 7 - Google Earth image of viewpoints 18 to 21 (not to scale)

- 22. Kendalls Wharf/Baffins Rovers (identified as a key location due to location of HDD compound, private access will be required)
- 23. Langstone Harbour Playing Fields
- 24. Great Salterns Mansion (the car park is subject to restrictions, agreement to be sought with landowner)

25. Tangier Road

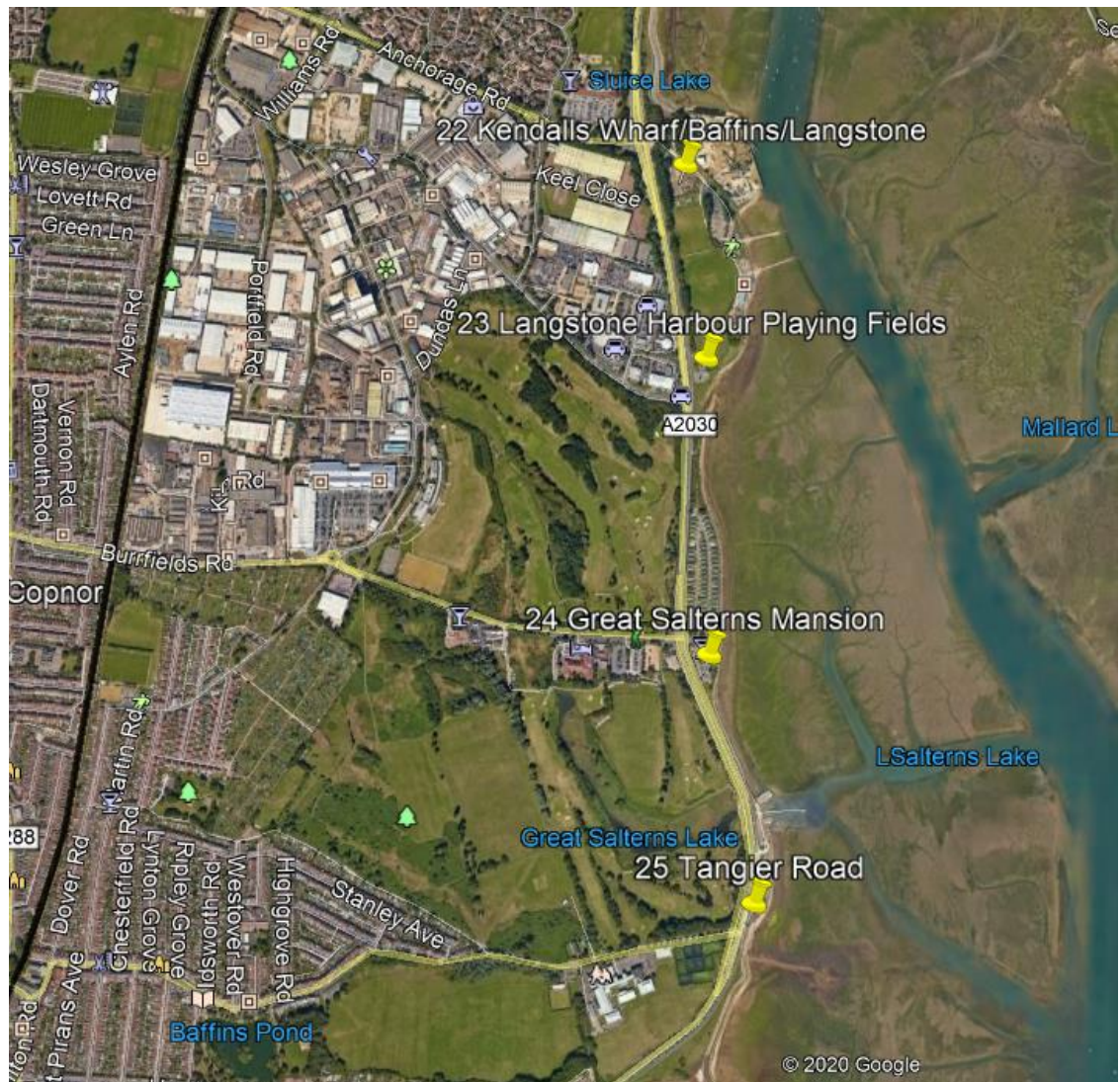


Plate 8 - Google Earth image of viewpoints 22 to 25 (not to scale)

- 26. Eastern Road/Eastern Avenue
- 27. Milton Common/Moorings Way/University(Langstone)/Furze Lane
- 28. Thatched House/University(Langstone)



Plate 9 - Google Earth image of viewpoints 26 to 28 (not to scale)

- 29. Kingsley Road Open Space
- 30. Bransbury Park
- 31. Fort Cumberland Junction
- 32. Fort Cumberland Road Carpark/Landfall
- 33. Fort Cumberland, viewpoint 22
- 34. Fort Cumberland Ravelin (identified as a key viewpoint for Historic England, private access will be required)
- 35. Eastney Beach



Plate 10 - Google Earth image of viewpoints 29 to 35 (not to scale)

1.5. SUMMARY

- 1.5.1.1. The Applicant welcomes feedback on these proposed locations so that the list of viewpoints can be finalised which best illustrates the overall characteristics of the complete scheme. These locations have been identified on the assumption that access will be possible, but it may be the case that access to private property is not possible.

